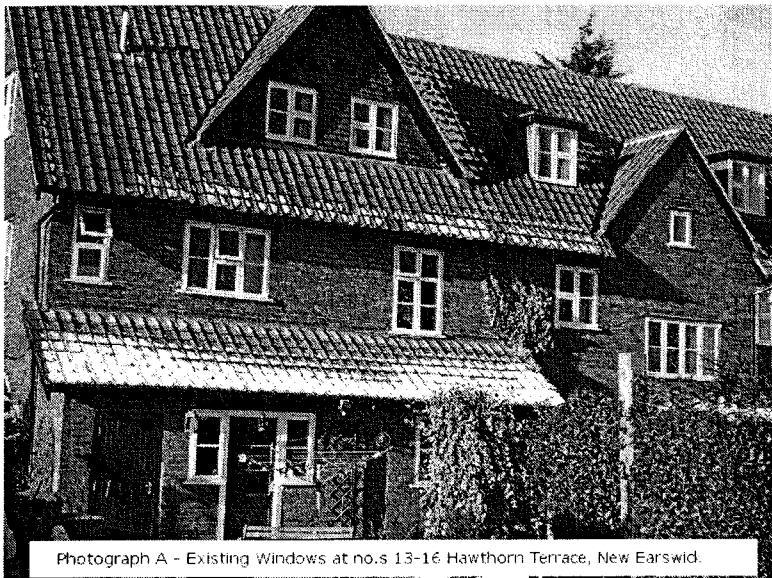


No.s 1-16 Hawthorn Terrace, New Earswick, ref. 10/00424/LBC



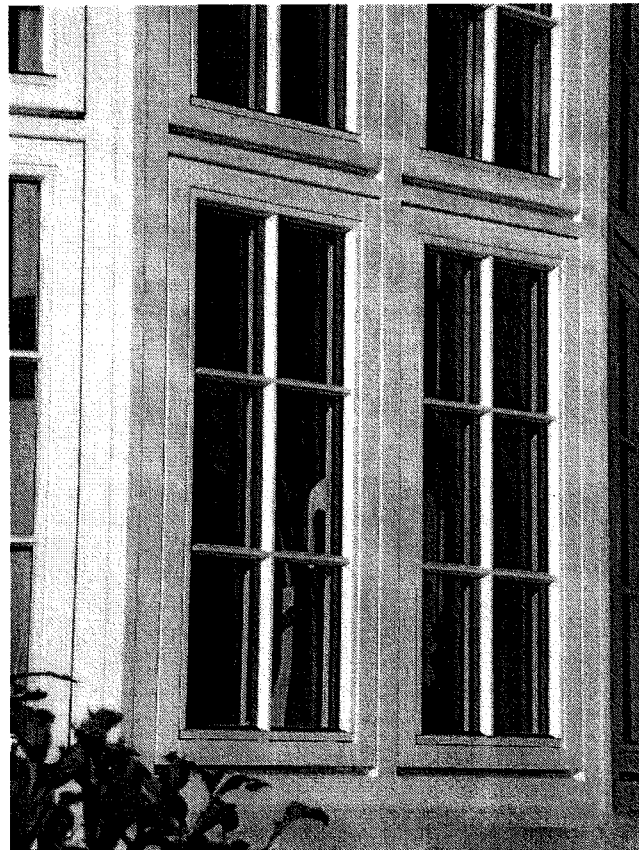
Photograph A - Existing Windows at no.s 13-16 Hawthorn Terrace, New Earswick.



Photograph B - Existing Windows at no.s 1-2 Hawthorn Terrace, New Earswick.



Photograph C - Window samples at no.s 1,3,5 and 7 Poplar Grove, New Earswick.



Photograph D - Window samples at no.s 1,3,5 and 7 Poplar Grove, New Earswick.

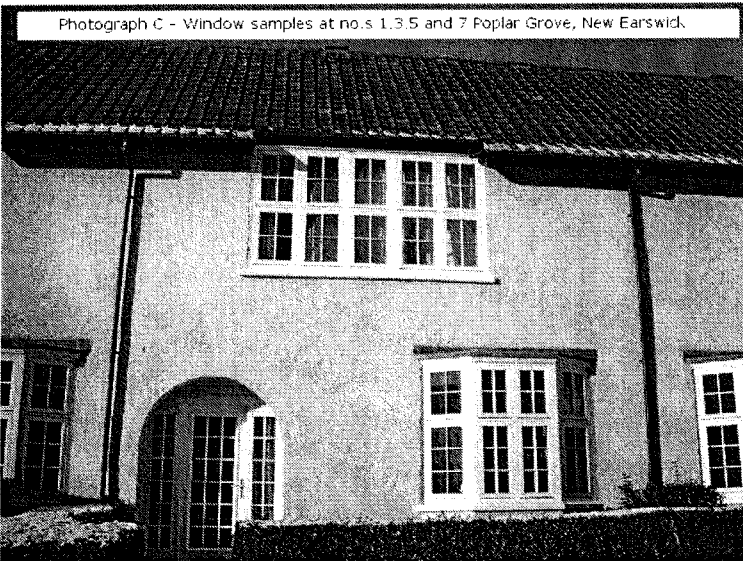
No.s 1-20 Ivy Place, New Earswick, ref. 10/00427/LBC



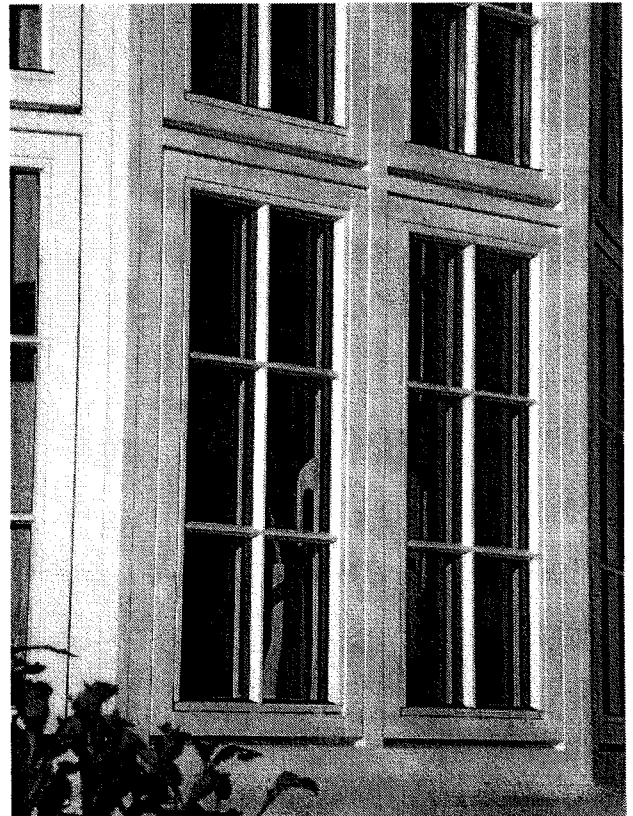
Photograph A - Existing windows at nos 11-12 Ivy Place, New Earswick.



Photograph B - Existing windows at nos 6-12 Ivy Place, New Earswick.



Photograph C - Window samples at nos 1,3,5 and 7 Poplar Grove, New Earswick.



Photograph D - Window samples at nos 1,3,5 and 7 Poplar Grove, New Earswick.